

The Lantronix logo features the word "LANTRONIX" in a bold, sans-serif font. The letters "LANTRON" are white, while the "IX" is orange. A registered trademark symbol (®) is positioned to the upper right of the "X".

LANTRONIX®

xPico 600 Embedded Wi-Fi 6 Gateway for Industrial Connectivity

Channel Express Deck - April 2026

xPico 600 Embedded Wi-Fi 6 Gateway for Industrial Connectivity

Embedded Wireless Connectivity Is Too Hard

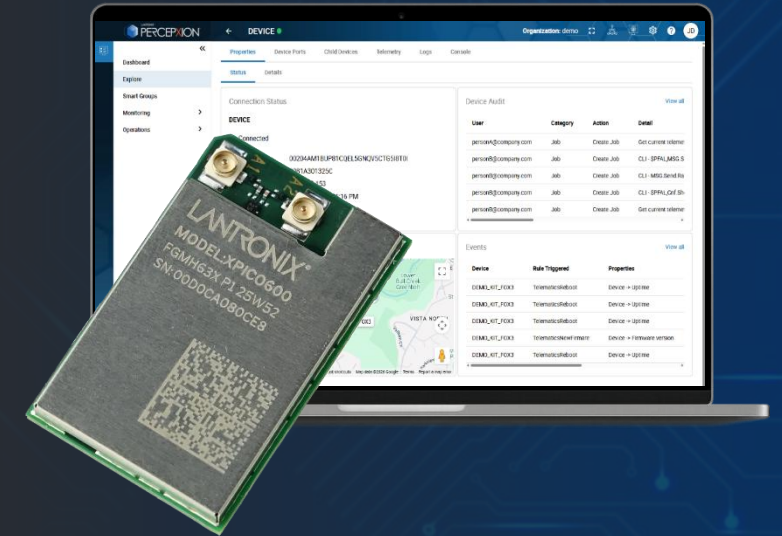
Integrating Wi-Fi into embedded devices demands:

- RF expertise
- Global certifications
- Ongoing network-stack integration & maintenance
- Cybersecurity lifecycle management

A secure, certified, feature-rich hostless embedded gateway is needed to cut integration time and ensure long-term support.

LANTRONIX

Innovation Reimagined.



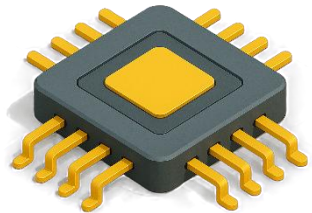
LANTRONIX
PERCEPTION

How xPico 600 Solves These Challenges



Unreliable Connectivity

- Wi-Fi 6 (802.11ax) with OFDMA and MU-MIMO
- 60% lower latency in congested environments



Firmware Stability

- Secure Boot + OTA with Rollback
- 99.9% uptime in field tests
- Pre-Integrated Perception for Cybersecurity Lifecycle Management

InfiniShield™
Security



Security Risks

- InfiniShield™ (WPA3, TLS 1.3, AES-256)
- Zero breaches in deployed systems

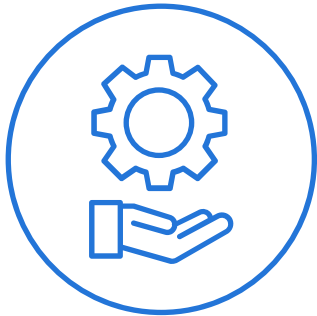


Data Logging and Latency

- Dual-band Wi-Fi + BLE 5.4 for redundant connectivity
- <10 ms latency for critical data

Lantronix Embedded Modules

Key differentiator



Globally certified with detailed integration guide & cybersecurity lifecycle management



Secure boot, integrated network stack, WPA3/TLS1.3



Long-Lifecycle at an Accessible Price Point



LANTRONIX
PERCEPTION™

Best-Fit Segments & Use Cases

Industrial Automation – Wi-Fi 6 Upgrade Cycle

PRIME FIT

Factories migrating from Wi-Fi 5 to Wi-Fi 6 for denser deployments; PLCs, CNCs, Modbus RTU devices needing serial-to-IP bridge on Wi-Fi 6; enterprise WPA3-Enterprise mandatory IT policies



Medical Devices & Diagnostics (NDAA Sensitive)

PRIME FIT

Portable diagnostic instruments requiring FDA-ready security + NDAA compliance; hospital WPA3-Enterprise networks; compact LGA footprint; xPico 600 is the first xPico with NDAA clearance



Robotics, AGV & AMR – High-Density Warehouses

PRIME FIT

Hundreds of robots in RF-congested warehouses benefit from Wi-Fi 6 OFDMA; fast 802.11r roaming; dual independent antennas reduce interference between Wi-Fi and BLE sensor channels



Transportation & Smart Infrastructure

STRONG FIT

In-vehicle fleet telematics, bus systems, EV charging stations upgrading to Wi-Fi 6; M.2 form factor enables designs using standard M.2 slots in vehicle control units and infrastructure equipment



xPico 600 Platform Advantage

<p>1 Wi-Fi 6 (802.11ax) → The feature & cost sweet-spot for long term machine connectivity</p>	<p>4 WPA3-Enterprise Security → Provides latest encryption for secure data transmission in critical applications</p>
<p>2 Standard M.2 3030 E-Key → Enables drop-in integration into existing M.2 ecosystems, reducing design complexity</p>	<p>5 NDAA Compliant → Cleared for US government, defense and security-sensitive programs</p>
<p>3 Bluetooth® Low Energy (BLE) 5.4 → Supports simultaneous Wi-Fi + BLE for local diagnostics and cloud sync—no trade-offs</p>	<p>6 802.11r Fast Roam → Seamless handoffs for mobile equipment in dynamic environments</p>

Category	Our Hostless xPico 600	Bit pipe Module	Talking Point	Why it matters?
Cost	Medium	Lower ≠ Lowest TCO	OEM builds network stack, certifications, and device mgmt separately	xPico 600 expedite time to revenue
Throughput	Up to 100 Mbps	100+ Mbps	Design for stability and cost, not for max speed	Industrial environments prioritize reliability over raw speed
SDK, API	✓ Fully Integrated	×	Support application development and API	Plug-and-play integration with your existing systems
Certifications	✓ Fully certified	×	Fully certified, and we help you with your product approval	Faster compliance—no delays waiting for certifications
Network Stack integration on your system	✓ Not required	×	Everything runs on the module, no network stack needed	Simplifies deployment—no need for external MCUs or custom firmware

Industrial-grade Wi-Fi and Ethernet connectivity that reduce integration time by months

All-in-one Secure Hostless Module

- No need to purchase additional processor and memory to run your network stack: Integrated Wi-Fi 6 + Ethernet with enterprise-grade security (WPA3, TLS 1.3, secure boot)
- 802.11r Fast Roaming for seamless handovers in dense industrial environments
- Pre-certified Industrial Protocols (Modbus, MQTT) and PercepXion™ cloud management

6-Month Time-to-Market Advantage

- Plug-and-play module—no network software development required
- Pre-certified & pre-integrated—skip RF expertise and lengthy certifications
- Faster deployment, lower risk—focus on core product, not connectivity



Trusted by Industry Leaders for 20+ Years

From Foundational Wi-Fi Modules to the xPico 600: A Proven Track Record of Reliability and Innovation.



Lantronix Legacy

Since 2003, Lantronix has delivered **Wi-Fi modules** to global leaders in **medical, industrial, and robotics**.

Industry benchmarks:
Reliable connectivity for **100,000+ devices** globally.



xPico 600 Proof Points

The xPico 600 is the **latest evolution** of a well-established product family, built on **20+ years of expertise**.

NDAA compliance ensures security for **government and defense applications**.



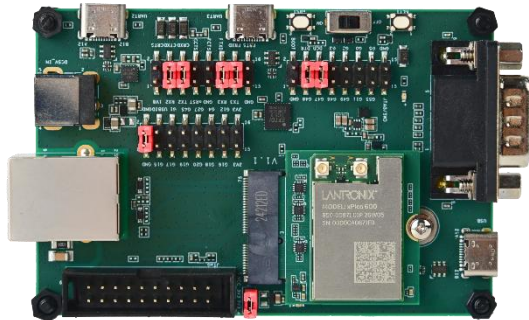
Explore embedded case studies and success stories

- [Industrial Weighing Scales](#): Always-on connectivity for real-time data logging and cloud sync.
- [Medical Industry](#): Secure, wireless broadband for patient monitors and infusion pumps.

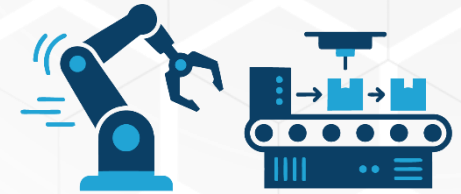
xPico 600 Applications at a Glance

Wi-Fi 6 / BLE 5.4 Embedded Gateway

xPico 600 simplifies connectivity with a turnkey solution, accelerates time to market and ROI



Scales or Printers



Industrial Machines



AGV & Robotics



EV charger



Medical equipment's



Smart Infrastructure

Partner Call to Action: Start the Conversation

Ask These Discovery Questions:

- **Identify the Need** – How does your business use connected data today, and how critical is real-time visibility to your operations?
- **Identify the Pain Points** – Where do you experience the greatest challenges today—connectivity reliability, security, protocol support, or system integration?
- **Decision-Making Process** – Who is involved in decisions like this, and where are you in the project timeline versus early cost evaluation?
- **Budget Readiness** – Is there an allocated budget for this initiative, and how do you evaluate total cost of ownership over the lifecycle?
- **Data Security** – What security, privacy, or compliance requirements must be met to move forward confidently?
- **Support & Services** – What level of pre-sales support, technical engagement, and post-deployment services do you expect?

Next Steps & Resources

01

Partner Enablement

Access technical training, sales tools, and demo kits with your MyLantronix account on our SmartEdge portal

02

Customer Discovery

Schedule joint prospect calls with our team

03

Proof of Concept

POC deployment to wow your customers

04

Scale & Grow

Expand successful POC deployments into enterprise-wide solutions



Thank You!



[/LantronixIoT](#)



[/lantronix](#)



[@lantronix](#)



www.lantronix.com



[/user/LantronixInc](#)