



LANTRONIX®

5G Enterprise for IIoT

February 2026

# Lantronix 5G Enterprise Connectivity: Secure, Industrial-Grade & Reliable

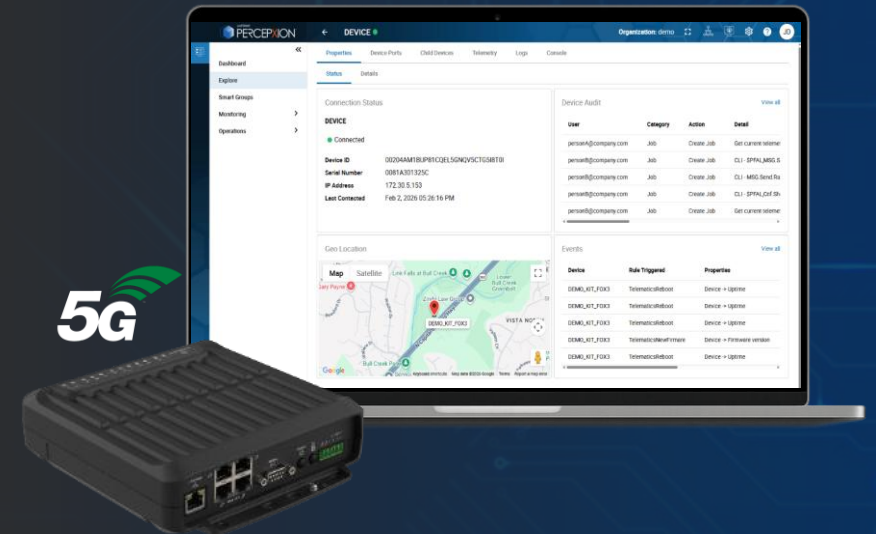
“Sites are diverse, legacy, and distributed; downtime and slow deployments drive real cost.

Teams need high-speed, secure, always-on connectivity that scales economically – without rewiring sites or long deployment lead times.”

High-Performance 5G, Made Practical for Industrial Operations

# LANTRONIX

Innovation Reimagined.



LANTRONIX<sup>®</sup>  
**PERCEPXION**<sup>™</sup>

# Industrial-grade cellular connectivity that just works—fast to deploy, secure to scale

- **Future-Ready, Always-On Connectivity**  
Long-lifecycle 5G connectivity delivers high-speed, always-on broadband to distributed assets and remote sites—built to support operations for years, not upgrade cycles.
- **Enterprise-Class Performance at Lower Cost**  
Advanced 5G wireless connectivity delivers enterprise-class performance at a breakthrough price point, while rugged industrial design and centralized fleet management via PercepXion™ reduce total cost of ownership as deployments scale.



# Applications | Target Markets | Key Use Cases

**IIoT Applications in 5G Enterprise:** Industrial automation, AGV, Security & Surveillance, Traffic monitoring, LPR, In-vehicle connectivity, Construction sites, Retail & QSR.



## Retail & Branch Connectivity

### Resilient Connectivity → Enhance Customer Experience

Lantronix 5G delivers fast, low-cost broadband for retail, overcoming infrastructure limits. Ensures always-on connectivity for inventory, transactions, and customer engagement—reducing downtime



## Energy & Industrial Modernization

### Seamless Integration → Modernize Legacy Systems

Lantronix G520 connects legacy Modbus to SCADA via cellular, eliminating infrastructure upgrades. Secure, rugged, and VPN-equipped, it enables remote management via PercepXion™—future-proofing industrial operations.



## Smart Cities & Transportation

### Reliable Field Connectivity → Reducing operational delays

Lantronix NTC-550 vehicle-mounted routers provide a secure, high-speed Wi-Fi hotspot for handheld and field team devices, ensuring stable connectivity and cutting operational delays.

# Lantronix IIoT 5G Enterprise

## Core Benefits



Ultra-fast, Reliable 5G  
Connectivity –  
Up to 2.5 Gbps speeds



Advanced networking, security  
and routing capabilities.



Long-Lifecycle Performance  
at an Accessible Price Point

**5G**



# Fueling Enterprise Operations with 5G

*Evolving from legacy networking to reliable, high-speed, and scalable 5G delivers greater operational efficiency and exceptional lifetime value.*



## The Old Way Limited Legacy Connectivity

- Downtime impacts productivity
- Costly site visits
- Expensive cabling
- Fragmented systems & operations



## The New Way Faster, Smarter, More Scalable

- Always-on wireless broadband
- Remote service capabilities
- Simple & low-cost rollout
- Unified real-time management

# Use Case: Retail and Remote Sites

## Challenge

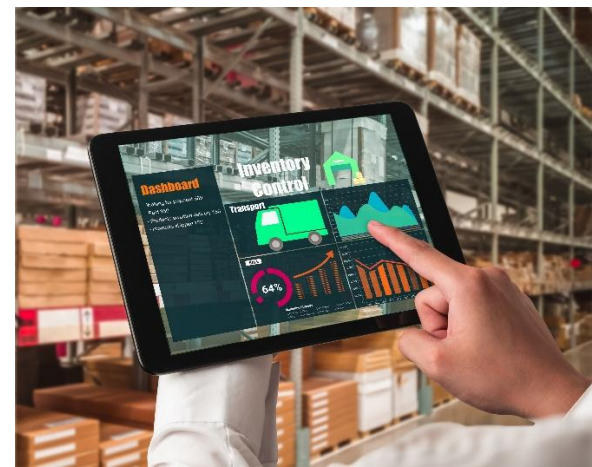
Older retail or redeveloped buildings for retail experienced delays in connectivity due to permitting details and a lack of supporting infrastructure.

## Solution

NTC-500 Series deliver fixed wireless access where wired networks are impractical and expensive. Ideal for remote sites, critical infrastructure, and mobile assets. Enabling fast deployment, lower costs, and resilient communications

## Why Customers Choose Lantronix

- Ease of Setup & Low TCO
- High-Speed Low-Latency Wireless Performance
- Scalable and Future-proof



# Use Case: Utility Service In-Vehicle Connectivity

## Challenge

Technical personnel working near their utility service vehicles require reliable Wi-Fi connectivity for tablets, laptops, and handheld devices to perform daily operational tasks. This connectivity must be secure, stable, and capable of supporting critical applications in the field.

## Solution

Lantronix **vehicle-mounted NTC-550** delivers a robust connectivity solution by creating a secure Wi-Fi hotspot around the service vehicle. It incorporates advanced VPN, firewall, and encryption technologies to ensure data security. Additionally, the router is integrated with PercepXion™, enabling centralized fleet monitoring, configuration, and real-time updates for seamless field operations.

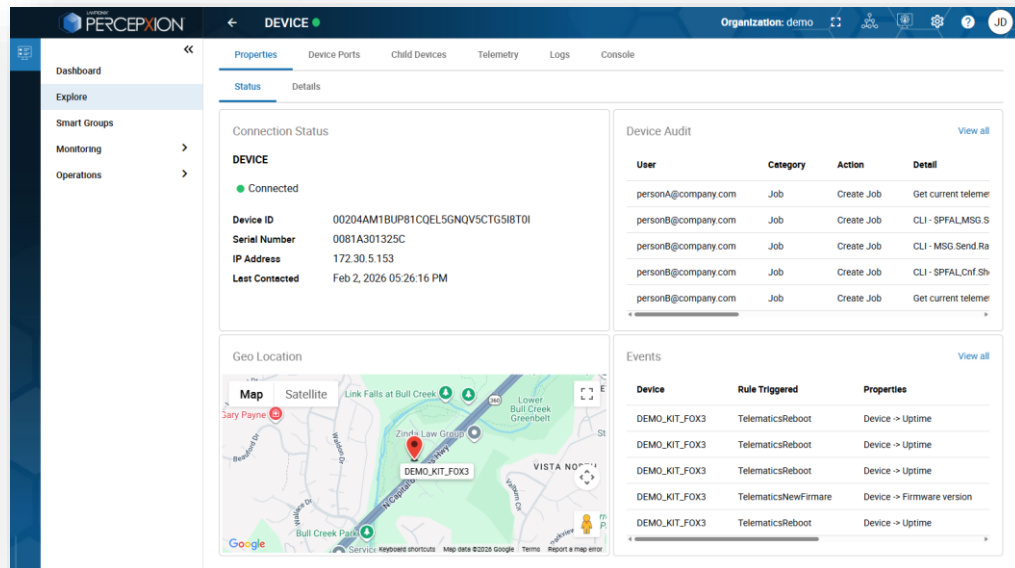
## Why Customers Choose Lantronix

- Fast installation: No extra power protection needed, just connect to the battery
- eMark
- Low TCO



# Lantronix IIoT Solution for 5G Enterprise

End-to-end device lifecycle management with a cloud-ready architecture, delivered through an intuitive UX and powered by PercepXion™ remote management and ACS.



• Traffic and Intersection monitoring (e.g., LPR)



• Mobile surveillance trailer with IP Camera



• Connected Service Vehicle for Utilities



• Construction sites broadband connectivity and surveillance



# Partner Call to Action: Start the Conversation

## Ask These Discovery Questions:

- **Identify the Need** – How does your business use connected data today, and how critical is real-time visibility to your operations?
- **Identify the Pain Points** – Where do you experience the greatest challenges today—connectivity reliability, security, protocol support, or system integration?
- **Decision-Making Process** – Who is involved in decisions like this, and where are you in the project timeline versus early cost evaluation?
- **Budget Readiness** – Is there an allocated budget for this initiative, and how do you evaluate total cost of ownership over the lifecycle?
- **Data Security** – What security, privacy, or compliance requirements must be met to move forward confidently?
- **Support & Services** – What level of pre-sales support, technical engagement, and post-deployment services do you expect?

## Next Steps & Resources

---

01

### Partner Enablement

Access technical training, sales tools, and demo kits with your MyLantronix account on our SmartEdge portal

---

02

### Customer Discovery

Schedule joint prospect calls with our team

---

03

### Proof of Concept

POC deployment to wow your customers

---

04

### Scale & Grow

Expand successful POC deployments into enterprise-wide solutions



Thank You!



[/LantronixIoT](#)



[/lantronix](#)



[@lantronix](#)



[www.lantronix.com](http://www.lantronix.com)



[/user/LantronixInc](#)