

LANTRONIX®

XPort® Direct™+



## **XPort Direct+ Demonstration Kit Quick Start Guide**

Part Number 900-525  
Revision A October 2007

## Contents

Contents .....	1
Introduction .....	1
What's in the Box .....	1
LEDs .....	1
Connect the XPort Direct+ Demonstration Board .....	1
What You Need to Know .....	4
Hardware Address .....	4
IP Address .....	4
Install DeviceInstaller .....	4
Assign IP .....	4
Configure .....	6

## Introduction

Thank you for your decision to purchase the XPort Direct+ Demonstration Kit from Lantronix. Use this Quick Start as a handy reference to get you up and running quickly. It will take you step by step through hardware setup and configuration and help you verify that everything is working.

## What's in the Box

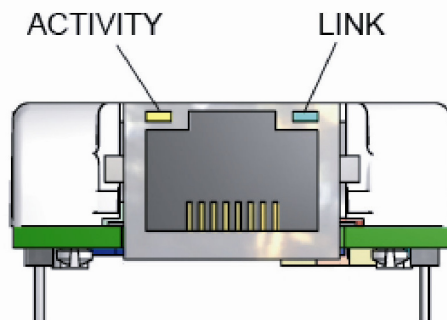
- ◆ XPort Direct+ Demonstration Board
- ◆ XPort Direct+
- ◆ +3.3 VDC Universal Power Supply with snap-fit plugs for different countries
- ◆ RS232 cable, DB9F/F
- ◆ CAT5e UTP RJ45M/M Ethernet cable
- ◆ CD with software utilities and documentation (in PDF format)

## LEDs

The XPort Direct+ contains the following LEDs:

- ◆ Link (Green LED)
- ◆ Activity (Yellow LED)

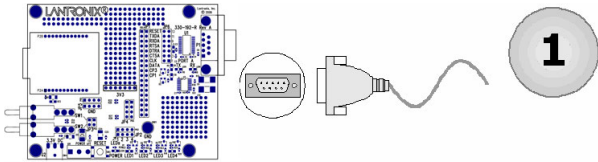
Link LED – Left Side		Activity LED - Right Side	
Status	Meaning	Status	Meaning
Off	No link	Off	No Activity
Green	Link established	Blink yellow	Activity



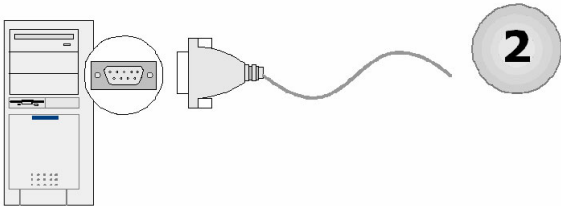
## Connect the XPort Direct+ Demonstration Board

To get started, you must connect the XPort Direct+ Demonstration Board to your network. Follow the steps below:

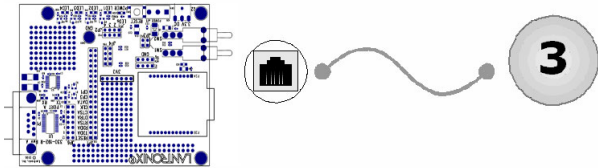
**Note:** This procedure assumes that the PC is connected to the network. You may connect a crossover Ethernet cable directly between the PC and XPort Direct+ Demonstration Board if a network is not available.



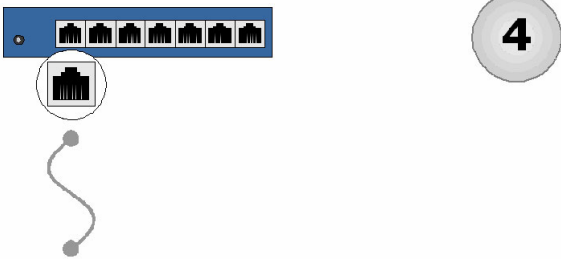
**1** Connect the RS-232 cable to the serial interface of the XPort Direct Demonstration Board.



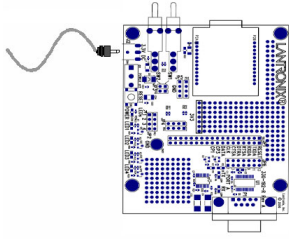
**2** Connect the RS-232 cable to an available serial port on the back of your PC.



**3** Connect one end of the Ethernet cable to the XPort Direct.

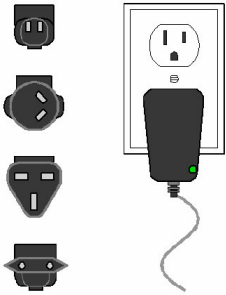


**4** Connect the other end of the Ethernet cable to your network hub.



5

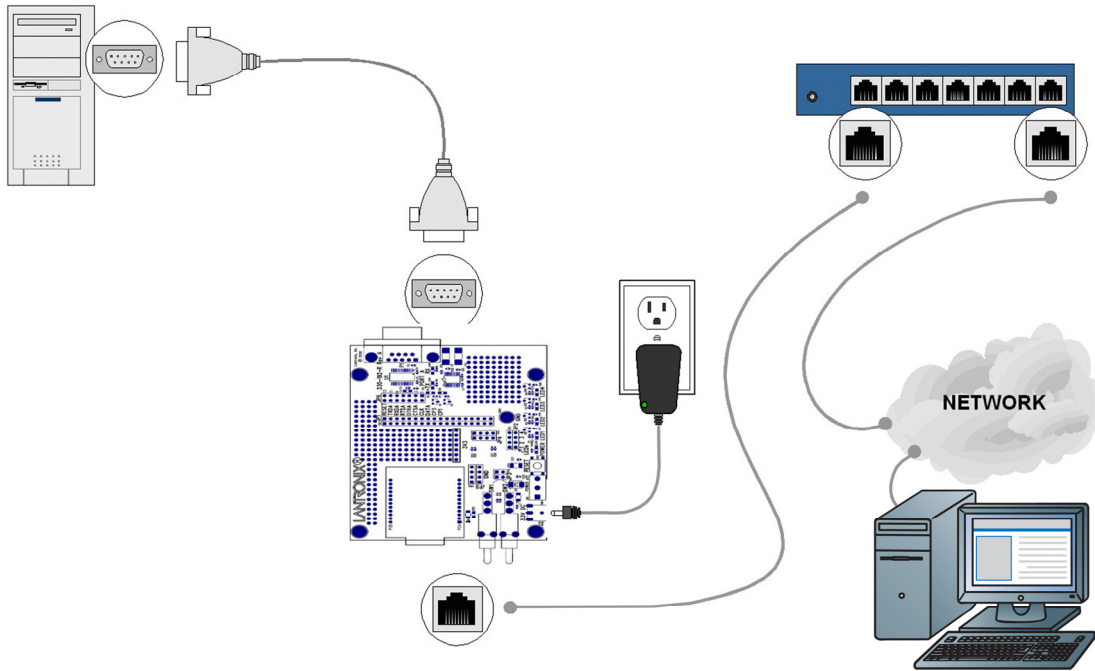
Connect the Universal Power Supply to the XPort Direct Demonstration Board.



6

Select the appropriate power plug adaptor for your geographical location. Insert it into the slot on the Universal Power Supply; then plug the power supply into an outlet.

The final setup should look like this:





**Verification Check:** If powered up correctly, the XPort Direct+ Demonstration Board power LED indicator lights blue and remains on. This LED is near the reset switch.

## What You Need to Know

### Hardware Address

You need to know the unit's hardware address (also known as a MAC address). It is on the product label, in the format: 00-20-4a-XX-XX-XX, where the XXs are unique numbers/letters assigned to the product.

**Hardware Address:** 00-20-4a-\_\_\_\_-\_\_\_\_-\_\_\_\_

### IP Address

Your XPort Direct+ must have a unique IP address on your network. The systems administrator generally provides the IP address, subnet mask, and gateway. The IP address must be within a valid range, unique to your network, and in the same subnet as your PC.

**IP Address:** \_\_\_\_\_

**Subnet Mask:** \_\_\_\_\_

**Gateway:** \_\_\_\_\_

You have several options for assigning an IP to your unit. We recommend that you connect the XPort Direct+ to the network and assign the IP address using DeviceInstaller software, which is on the product CD. For information on other methods, see the *XPort Direct+ User Guide*.

## Install DeviceInstaller

1. Open DeviceInstaller on the CD-ROM.  
If the CD does not launch automatically:
  - a. Click the **Start** button on the Task Bar and select **Run**.
  - b. Enter your CD drive letter, colon, backslash, **Launch.exe** (e.g., D:\Launch.exe).
2. Respond to the installation wizard prompts.


**Note:** For more information about DeviceInstaller, see the *DeviceInstaller online Help*.

## Assign IP

The unit's IP address is normally set to 0.0.0.0 at the factory. The hardware address is on the product label. The unit is DHCP enabled as the default.

1. Click **Start**→**Programs** → **Lantronix**→**DeviceInstaller**→**DeviceInstaller**. If your PC has more than one network adapter, a message displays. Select an adapter and click **OK**.

**Note:** If the unit already has an IP address (e.g., DHCP has assigned an IP address), click the **Search** icon and select the unit from the list of Lantronix units on the local network.

2. Click the **Assign IP** icon .
3. If prompted, enter the hardware address (on the product label) in the format 00-20-4a-XX-XX-XX, where the XXs are unique numbers/letters assigned to the product. Click **Next**.

**Device Identification**

Enter the hardware address of the device. This is typically printed on the back panel of the device in the form "12-34-56-78-9A-BC".

4. Select **Assign a specific IP address** and click **Next**.

**Assignment Method**

Would you like to specify the IP address or should the unit get its settings from a server out on the network?

Obtain an IP address automatically

Assign a specific IP address

5. Enter the **IP address**. The **Subnet mask** displays automatically based on the IP address; if desired, you may change it. On a local network, you can leave the **Default gateway** blank (all zeros). Click **Next**.

**IP Settings**

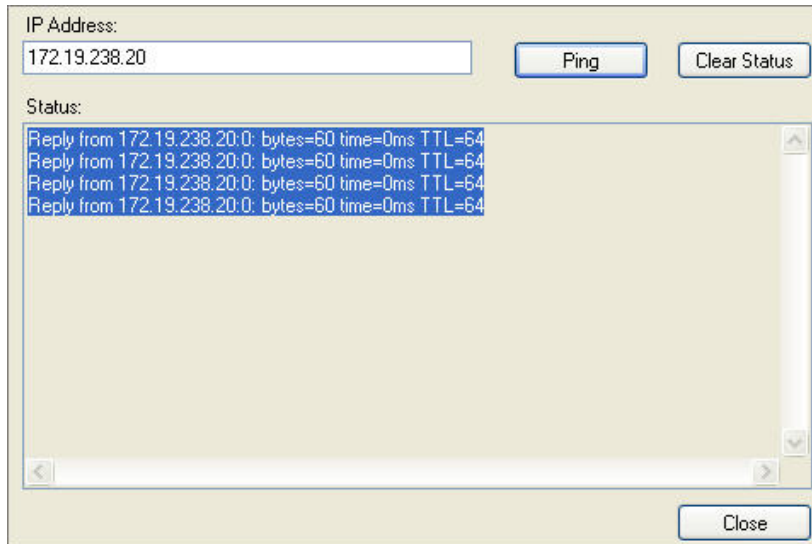
Please fill in the IP address, subnet, and gateway to assign the device. The subnet will be filled in automatically as you type, but please verify it for accuracy. Incorrect values in any of the below fields can make it impossible for your device to communicate, and can cause network disruption.

IP address:

Subnet mask:

Default gateway:

6. Click the **Assign** button and wait several seconds until a confirmation message displays. Click **Finish**.
7. Select the XPort Direct+ from the main window list and click **Tools→Ping**. The results display in the Status area. Click the **Clear Status** button to clear the window so you can ping the device again.



**Note:** If you do not receive “Reply” messages, make sure the unit is properly attached to the network and that the IP address assigned is valid for the particular network segment you are working with.

8. Click the **Close** button.

## Configure

In this Quick Start Guide, we briefly describe how to configure the XPort Direct+ using Telnet. For more information about configuration, see the *XPort Direct+ User Guide*.

1. In DeviceInstaller, select the unit and click the **Telnet** tab. The following information displays:

```
MAC address 00204A808BD2
Software version U6.5.0.8RC4 <070917>
Press Enter for Setup Mode
```

2. To enter Setup Mode, **press Enter within 5 seconds**. The configuration settings display, followed by the **Change Setup** menu.

```
Change Setup:
0 Server
1 Channel 1
3 E-mail
5 Expert
6 Security
7 Defaults
8 Exit without save
9 Save and exit           Your choice ? _
```

3. Select an option on the menu by entering the number of the option in the **Your choice?** field and pressing **Enter**.
4. To enter a value for a parameter, type the value and press **Enter**, or to confirm a current value, just press **Enter**.
5. When you are finished, save the new configuration (option 9). The unit reboots.